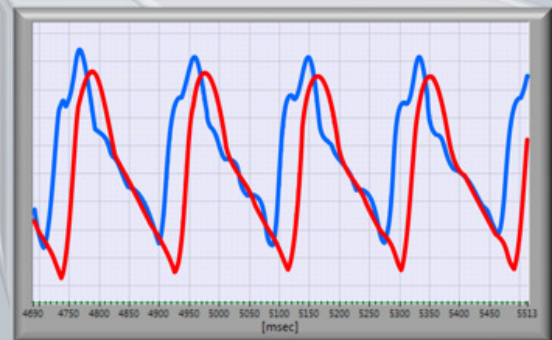
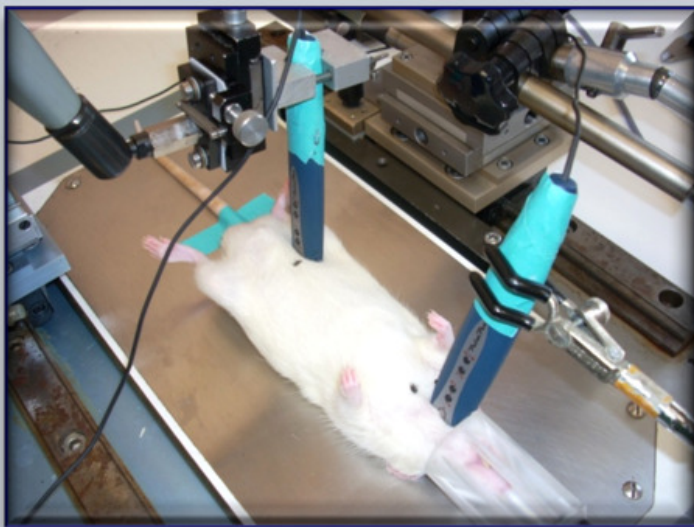
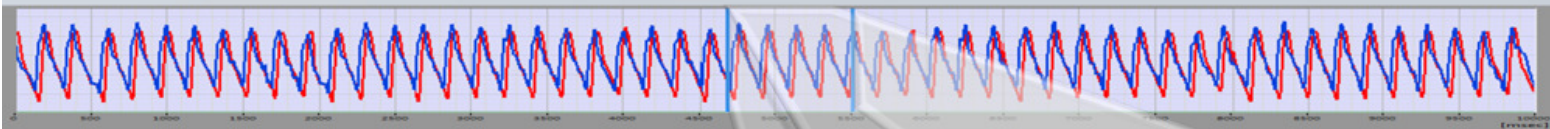


PulsePenLab[®]

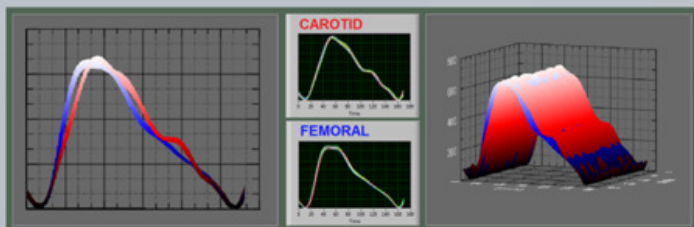
The non invasive arterial tonometer
for assessing Pulse Wave Velocity
and Pulse Wave Analysis
in rats and little animals



Longitudinal studies are now possible !



The *PulsePenLab* is derived from the *PulsePen* device, a validated and high-fidelity arterial tonometer, currently used in clinical practice to assess Pulse Wave Velocity and Pulse Wave Analysis in humans



TECHNICAL SPECIFICATIONS

- Two modified *PulsePen* tonometers record simultaneously central (carotid) and peripheral pulse pressure waves
- The probes are positioned and fixed on the arteries by means of mechanical arms
- Resolution and sample rate: 16 bit @ 1000 Hz
- High quality control

